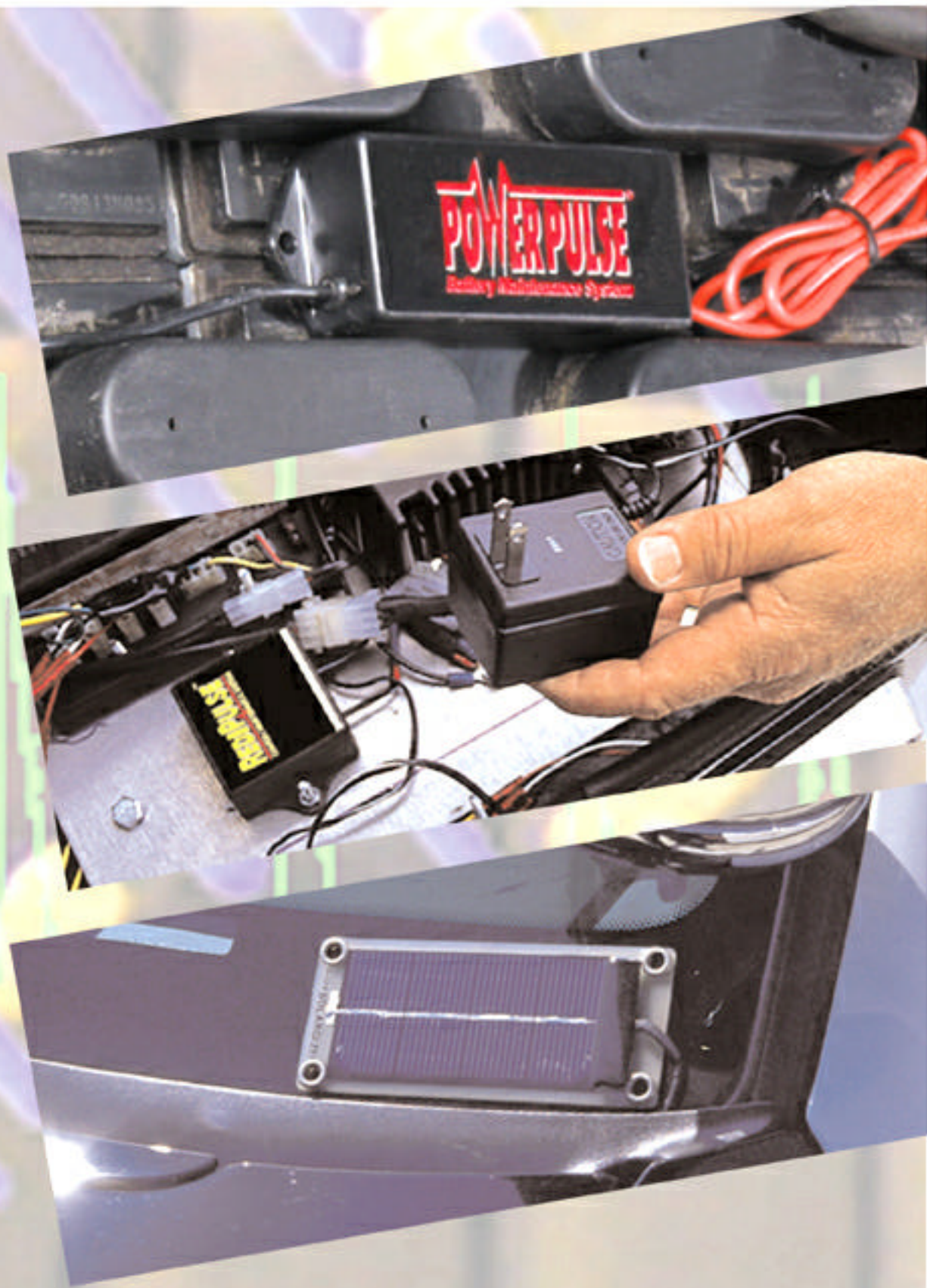


PRODUCT INSTALLATIONS



Examples of Actual
PulseTech Customer
Product Installations.

PulseTech
Products Corporation
The World Leader In Battery
Performance Technology

PASSENGER VEHICLES

Industrial 12-Volt Solargizer solar panel mounted at the base of the windshield of a passenger car.

Part No. 735X130



A 12-Volt PowerPulse attached to the battery in the trunk of a European luxury car.

Part No. 735X012



A RediPulse 6-12 used to prevent the loss of battery power on a collector car no matter how long it sits unused.

Part No. 735X260



A 48-Volt PowerPulse installed on an electric car owned by a former president of an electric vehicle association in California.

Part No. 735X048



The solar panel of an Industrial 12-Volt Solargizer installed on the bumper of an SUV.

Part No. 735X130



A 12-Volt PowerPulse attached to the battery of a family van.

Part No. 735X012



The solar panel of an Industrial 12-Volt Solargizer at the base of the windshield of a taxicab.

Part No. 735X130



The solar panels of two 24-Volt Solargizer systems mounted on top of a neighborhood electric car.

Part No. 735X150



An Industrial 12-Volt Solargizer solar panel mounted at the base of the windshield of a pickup truck.

Part No. 735X130



A 12-Volt PowerPulse installed near the battery of a pickup truck.

Part No. 735X012



Using Industrial 12-Volt Solargizers, the Dragon Master Exhibition Team reduced charge time on their ten rocket car batteries from four hours to only 45 minutes.

Part No. 735X130



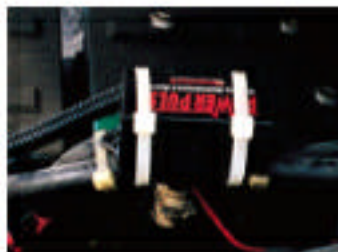
A RediPulse 6-12 installed on a motorcycle to help prevent the loss of battery power while the cycle is stored indoors.

Part No. 735X260



The solar panel of an Industrial 12-Volt Solargizer mounted on a school bus to prevent the loss of battery power while the bus sits unused during the summer.

Part No. 735X130



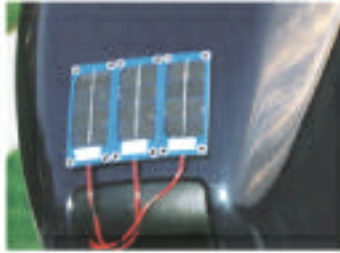
Two 12-Volt PowerPulse units installed on a city bus.

Part No. 735X012

BOATS & WATERCRAFT

The solar panels of three Industrial 12-Volt Solargizers mounted on the motor of a bass boat. One unit is connected to each of the three batteries.

Part No. 735X130



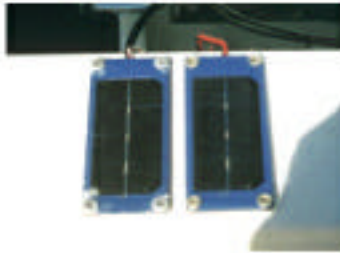
Two Industrial 12-Volt Solargizer solar panels mounted on a powerboat.

Part No. 735X130



Two Industrial 12-Volt Solargizer solar panels mounted on the back of a speed boat.

Part No. 735X130



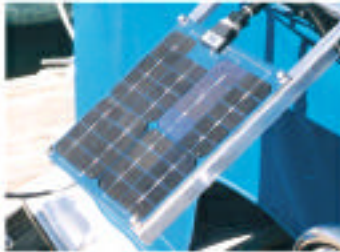
Three Industrial 12-Volt Solargizer solar panels mounted on a 42-foot ocean yacht.

Part No. 735X130



5-Watt Solargizer Solar Charger panel mounted on a sailboat to condition and charge the battery while the boat sits unused.

Part No. 735X605



The solar panels of two Industrial 12-Volt Solargizers mounted on the roof of a marina work boat.

Part No. 735X130



An Industrial 12-Volt Solargizer installed on a personal watercraft.

Part No. 735X130



RECREATIONAL VEHICLES & GOLF

12-Volt PowerPulse units installed on a large recreational vehicle.

Part No. 735X012



An Industrial 12-Volt Solargizer solar panel mounted on the side of a small camper.

Part No. 735X130



One of several golf carts at a major resort using the 36-Volt PowerPulse system.

Part No. 735X036



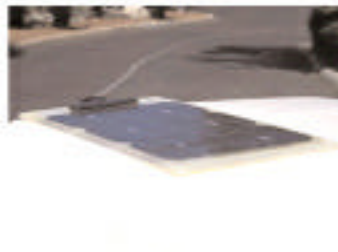
A RediPulse 36-48 unit installed on a golf cart at a resort in California.

Part No. 735X280



A Receptacle 36-Volt Solargizer (comes with solar panel and ac adapter) installed on passenger carts at a major resort.

Part No. 735X230



A 48-Volt PowerPulse on a service cart at a major resort in Las Vegas, Nevada.

Part No. 735X048



A RediPulse 6-12 unit on a golf course mower at a large resort.

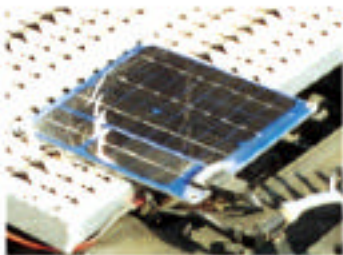
Part No. 735X260



COMMERCIAL TRUCKS

5-Watt Solargizer Solar Charger charging and cleaning the batteries on this over-the-road truck.

Part No. 735X605



12-Volt PowerPulse units on a truck used by a major agricultural company in California.

Part No. 735X012



12-Volt PowerPulse units on an over-the-road truck in Minnesota.

Part No. 735X012



Two Industrial 12-Volt Solargizer solar panels on the side of an over-the-road truck.

Part No. 735X130



An Industrial 12-Volt Solargizer on an over-the-road truck. There is one unit on each of three 12-volt batteries connected in parallel.

Part No. 735X130



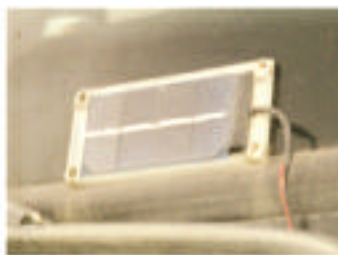
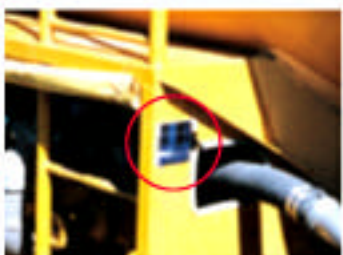
Industrial 12-Volt Solargizer installed on a service truck.

Part No. 735X130



The solar panel of a 24-Volt Solargizer unit on a Department of Transportation water tanker.

Part No. 735X150



An Industrial 12-Volt Solargizer solar panel installed on a delivery truck for a major distributor.

Part No. 735X130



An Industrial 12-Volt Solargizer solar panel on the side of a delivery truck used to deliver natural spring water.

Part No. 735X130



An Industrial 12-Volt Solargizer solar panel on the top of a concrete truck in Texas.

Part No. 735X130



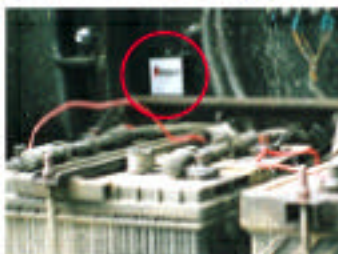
The solar panels of two Industrial 12-Volt Solargizers installed on a concrete truck.

Part No. 735X130



The solar panel of an Industrial 12-Volt Solargizer on the side of a waste disposal truck.

Part No. 735X130



The circuit box of an Industrial 12-Volt Solargizer mounted near the batteries on a waste disposal truck.

Part No. 735X130



An Industrial 12-Volt Solargizer solar panel on a reefer trailer used by a catering company.

Part No. 735X130

CONSTRUCTION & AGRICULTURE

A 24-Volt Solargizer solar panel installed on top of a large power shovel.

Part No. 735X150



An Industrial 12-Volt Solargizer solar panel mounted on top of a bull dozer.

Part No. 735X130



The solar panel of a 24-Volt Solargizer installed on another bull dozer.

Part No. 735X150



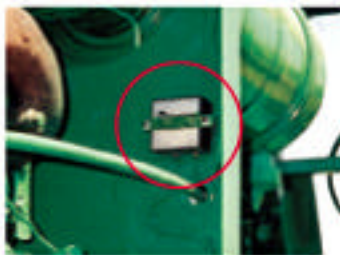
A 24-Volt Solargizer circuit box mounted by the batteries of an earth mover.

Part No. 735X150



An Industrial 12-Volt Solargizer circuit box on a bed digger used by a major agricultural company in California.

Part No. 735X130



The solar panel of an Industrial 12-Volt Solargizer mounted on the side of a cotton picker.

Part No. 735X130



An Industrial 12 Solargizer solar panel mounted on top of a small tractor.

Part No. 735X130



GROUND SUPPORT EQUIPMENT

Industrial 12-Volt Solargizer units being used to prevent the loss of battery power on a fleet of de-icers at a major airport.

Part No. 735X130



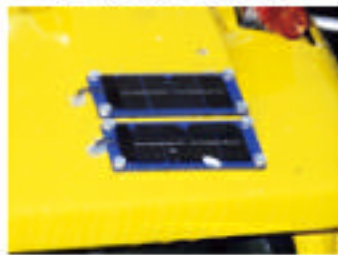
12-Volt PowerPulse units being used to prevent the loss of battery power on a snow blower at a major airport.

Part No. 735X012



Two Industrial 12-Volt Solargizer solar panels mounted on top of a snow plow at a major airport.

Part No. 735X130



A fuel truck with two Industrial 12-Volt Solargizer solar panels mounted on it.

Part No. 735X130



An Industrial 12-Volt Solargizer solar panel mounted on a fuel truck.

Part No. 735X130



The solar panel of an Industrial 12-Volt Solargizer mounted on the grill of a maintenance truck at a major airport in Texas.

Part No. 735X130



A 36-Volt Solargizer on a plane mover at a private airport.

Part No. 735X200



A 48-Volt PowerPulse on a forklift used by a major tool distributor in Texas.

Part No. 735X048



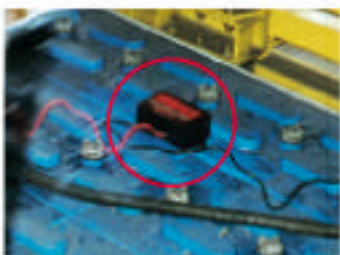
A forklift, used by a food supply company in Texas, with a 48-Volt PowerPulse.

Part No. 735X048



A 48-Volt PowerPulse on a forklift used by an auto manufacturer. The battery was set to be scrapped until PowerPulse reconditioned the plates. The battery now performs like new.

Part No. 735X048



A forklift battery at a major distribution company using a 48-Volt PowerPulse on the battery.

Part No. 735X048



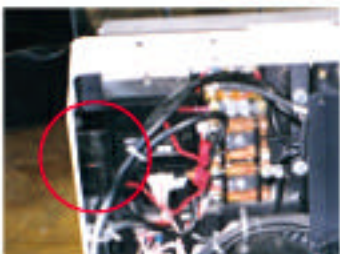
A pallet jack at a major tool distributor using a 24-Volt PowerPulse.

Part No. 735X024



A 24-Volt PowerPulse on a pallet jack used by a major beer company.

Part No. 735X024



A pallet jack at a major distribution company using a 24-Volt PowerPulse.

Part No. 735X024



A 48-Volt PowerPulse installed on a scissor lift.

Part No. 735X048



A welder with an Industrial 12-Volt Solargizer solar panel mounted on top.

Part No. 735X130



A 36-Volt PowerPulse on an industrial rider scrubber used at a major mall in North Texas.

Part No. 735X036



An industrial sweeper with a 36-Volt PowerPulse.

Part No. 735X036



One of three 24-Volt Solargizer units installed on a large backup system at a major clothing manufacturer.

Part No. 735X150



A large backup generator for a major airline using two Industrial 12-Volt Solargizer units.

Part No. 735X130



A 12-Volt PowerPulse on a large portable generator.

Part No. 735X012

EMERGENCY RESCUE & POLICE

12-Volt PowerPulse units installed on a fire engine to ensure maximum battery performance.

Part No. 735X012



An ambulance with a 12-Volt PowerPulse.

Part No. 735X012



The solar panel of an Industrial 12-Volt Solargizer mounted on the side of a paramedic truck in a major city in Florida.

Part No. 735X130



Solar panel of an Industrial 12-Volt Solargizer mounted on the push rack of a fire chief's car.

Part No. 735X130



10-Watt Solargizer Solar Charger panel mounted on the trunk of a police cruiser.

Part No. 735X610



A 12-Volt PowerPulse installed near the battery of a police cruiser.

Part No. 735X012



A police motorcycle using a RediPulse 6-12 to store the cycle indoors at night.

Part No. 735X260



RAILROAD

Two 10-Watt Solargizer Solar Chargers installed on a radio-controlled ballast car.

Part No. 735X610



Another radio-controlled ballast car with a 10-Watt Solargizer Solar Charger.

Part No. 735X610



A third ballast car using a 10-Watt Solargizer Solar Charger.

Part No. 735X610



Two 36-Volt PowerPulse units (one not shown) on a set of locomotive batteries.

Part No. 735X036



Another set of locomotive batteries with a 36-Volt PowerPulse unit.

Part No. 735X036



A third locomotive using a 36-Volt PowerPulse unit.

Part No. 735X036



Three of 16 Industrial 12-Volt Solargizers maintaining the backup batteries on a railroad crossing signal.

Part No. 735X130



MISC. VEHICLES & EQUIPMENT

An industrial 12-Volt Solargizer solar panel on a Department of Transportation highway signal.

Part No. 735X130



An Industrial 12-Volt Solargizer solar panel mounted on a Department of Transportation highway signal.

Part No. 735X130



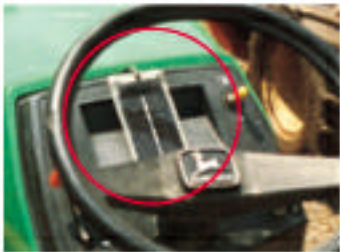
A 12-Volt PowerPulse on a solar-powered school zone signal.

Part No. 735X012



An industrial 12-Volt Solargizer solar panel mounted by the steering wheel of a lawn tractor.

Part No. 735X130



A handicap scooter with two 12-Volt PowerPulse units installed on the back.

Part No. 735X012



A 12-Volt PowerPulse installed on a computer battery within a remote tower used to send data to a weather satellite.

Part No. 735X012



The solar panel of 10-Watt Solargizer Solar Charger on a post by an automatic vehicle counter at a beach in Florida.

Part No. 735X610



MILITARY

Three 24-Volt Solargizer solar panels mounted on an M1-A1 Main Battle Tank

Part No. 735X150



A GKN Piranha equipped with a dual 24-volt Solargizer system.

Part No. 735X150



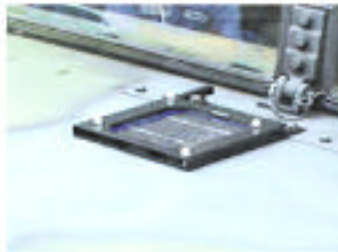
An M88 Tank Recovery Vehicle with three 24-Volt Solargizer solar panels mounted on the side.

Part No. 735X150



A 24-Volt Solargizer solar panel mounted on the hood of a Humvee at Fort Hood, Texas.

Part No. 735X150



Another Humvee equipped with a 24-volt PowerPulse.

Part No. 735X024



A 24-Volt Solargizer dual solar panel system on an FMTV.

Part No. 735X150



The solar panels of two 24-Volt Solargizers mounted on an Oshkosh 10-ton truck.

Part No. 735X150



PulseTech offers a full line of over 60 products that will change the way you look at battery performance forever. These patented systems work with virtually every type of vehicle and equipment that uses a lead-acid battery. And they provide the most effective and cost-efficient method of making sure your batteries work harder and last longer than ever before.

Visit your local PulseTech dealer today to learn how we can help you save considerable time, money and effort. For the dealer nearest you, just call **1-800-580-7554**. Or visit our web site today at **www.pulsetech.net**.

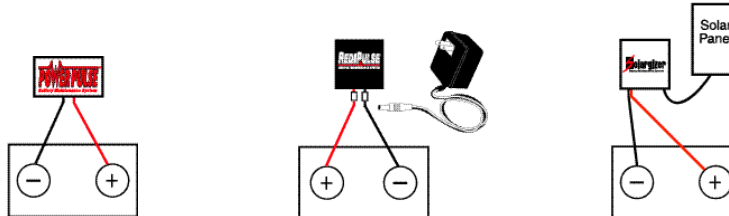
Basic Installations

PowerPulse®

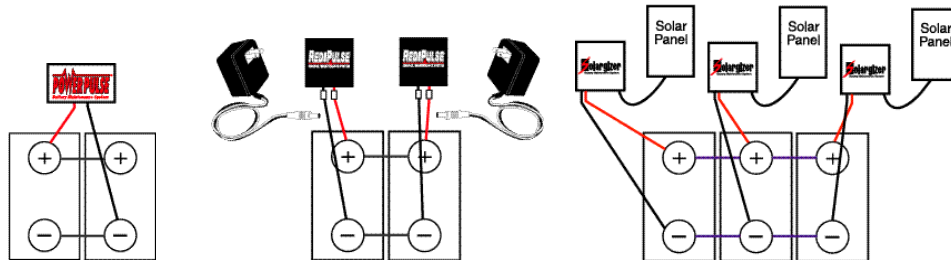
RediPulse®

Solargizer®

Single Battery Configuration (12-Volt Models)



Multiple Battery Configuration In Parallel (12-Volt Models)



Multiple Battery Configuration In Series (24-Volt Models)



For detailed information on installing our PulseTech products, see the installation manual included with each product, or visit our web site at www.pulsetech.net

PulseTech®
Products Corporation
The World Leader In Battery
Performance Technology