

## PRODUCT SPOTLIGHT

### 24-Volt Solargizer Battery Maintenance System

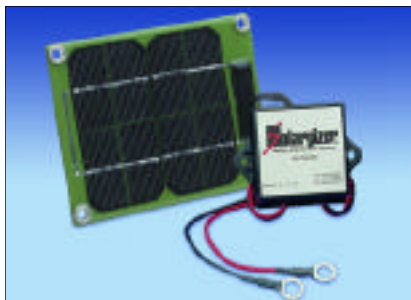
**Ensure Battery Performance On Large Applications!** The 24-Volt Solargizer (735X150) works with all battery systems up to 24 volts. It's ideal for construction equipment, farm implements, recreational vehicles, boats, tractor trailers and more.



Solargizer performance is so outstanding, the U.S. military is equipping combat and tactical vehicles across the country with this system.

Each solar-powered unit is supplied with  $\frac{3}{8}$ " lug attachments and 25 feet of wire between solar panel and circuit box for installation flexibility. A special mounting kit is also included.

The 24-Volt Solargizer is also available in a Receptacle model (735X220) with a specially-designed ac adapter for storage inside in areas without sunlight. Ten-year limited warranty.



## TESTIMONIAL

"I was so pleased with (PowerPulse) performance I decided to put it on all our battery-powered equipment, including solar deep cycle storage. I put the first one on my 1994 pickup... Now that the PowerPulse has been on the battery for over six weeks, I had the (battery) store test it and it tested 600 CCA — same as new."

Rod Summitt  
Oaktown, Ind.

## SUCCESS STORY

### U.S. Army Battery Recovery Rate Approaches 90% with Pulse Charger

The U.S. Army has been using PulseTech commercial battery performance and charging systems for almost ten years on a wide range of combat and tactical vehicles and equipment. Today, the Army is in the process of transitioning to a lighter, more mobile force. They are also going through a dramatic change in their existing battery shops — and the Pulse Charger®/World Version from PulseTech will be an integral part of these shops.

**PROBLEM:** Several years ago the Army had a single battery chemistry type in all their batteries. Over time that changed and they now have not only different chemistries but the different construction types too (flooded, Gel and AGM). The result was that even with the use of pulse technology for recovery, chargers then in use could not effectively recharge the many different battery types. That led to batteries not just failing to be recovered but many were actually being destroyed.

**SOLUTION:** Once it was identified that it was the outdated chargers inability to handle the multiple chemistries and constructions, the Pulse Charger (746X725) became the natural solution. The 24-Volt Solargizer (735X150) was also added to the Army's maintenance program.

**RESULTS:** To date, the Army has saved millions of dollars in battery purchases. The Solargizer system increased battery reliability on the vehicles and equipment no matter how long they sat unused. At the same time, the Pulse Charger has increased battery recovery dramatically. Now each battery, regardless of chemistry or construction can get exactly the charge/pulse regimen it needs with the



*The Pulse Charger®/World Version will be an integral part of the U.S. Army's "Battery Shop of the Future".*

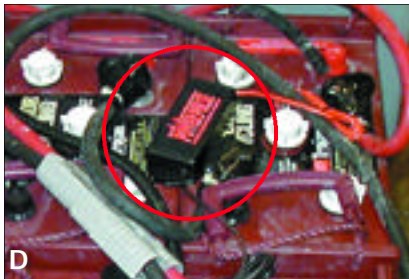
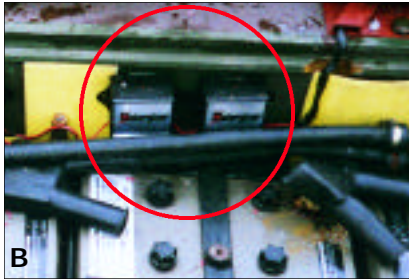
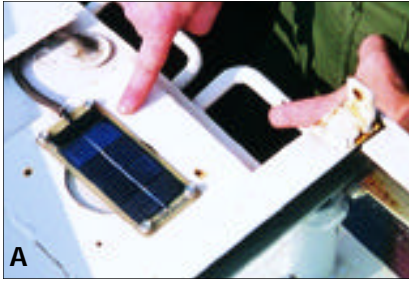
Pulse Charger. In fact, the Pulse Charger has performed so well, the Army has suggested it be used in all upcoming battery shops.

In a document titled *Final Report Model Battery Shop of the Future*, it states: "The Pulse Charger was used to charge the same type batteries. Recovery rates (with Pulse Chargers) approached 90%, and end condition was optimized in a time that varied between four and 12 hours per battery." It also reveals that "'Smart chargers' that incorporate pulse technology can be used to further streamline the recovery process and reduce manpower requirements. Pulse Chargers offer the best solution to recovering flooded electrolyte batteries, the most common type in the inventory."

Finally, the report says that besides battery recovery, smart chargers also "provide significant advantages in procedures. Since the chargers are 'flip and forget' systems, guesswork is eliminated. Segregation by battery type and voltage condition is no longer required. Use of the Pulse Charger eliminates the need for a separate pulse technology station, streamlining the process even further."

**LEARN MORE:** See your local PulseTech dealer to see how our products can help increase your battery reliability. For a dealer near you, call 1-800-580-7554. Or visit [www.pulsetech.net](http://www.pulsetech.net).

## SAMPLE INSTALLS



Installing PulseTech products is easy and well worth the time. Shown above are examples of actual customer installations:

- A. An Industrial 12-Volt Solargizer (735X130) solar panel mounted on top of a SWAT unit.
- B. 24-Volt Solargizer (735X150) circuit boxes installed on a U.S. Army M1 tank.
- C. A school bus with an Industrial 12-Volt Solargizer (735X130) solar panel mounted at the base of the windshield.
- D. A 36-Volt PowerPulse (735X036) installed on the batteries of an industrial scrubber at a major Texas mall.

## TECHTALK FAQ

Presenting a series of frequently-asked questions regarding the benefits of PulseTech products and how they can help your customers:

### Does PulseTech offer freestanding chargers?

Yes. We offer two different types of free-standing chargers: The Pulse Charger®/World Version and the DFC-12 Diagnostic Fast Charger.

The Pulse Charger (746X725) is actually four chargers in one. It's a state-of-the-art charging system (up to 20 amps) that works with both 12-volt conventional flooded lead-acid batteries and sealed "maintenance-free" batteries, including VRLA, AGM and gel cell. It also works off either 110- or 220-volt ac power so it can be used virtually anywhere in the world. At the same time, the Pulse Charger uses our patented *ReNew-IT Pulse Technology* to remove sulfation buildup. Use the Pulse Charger to return unreliable 12-volt lead-acid batteries to active service.

The DFC-12 Diagnostic Fast Charger (741X012) is a portable charger that can solve your battery problems in *less than an hour!* It not only charges the battery, it also uses Conductance Technology to test its condition. You can also use it to jump start a vehicle with a dead battery. It's ideal for all service facilities.

### What is the difference between the Pulse Charger, DFC-12, RediPulse Pro-10® and the Pulse Recovery System®?

The main difference is that the Pulse Charger and DFC-12 are both designed to be used on single lead-acid batteries, while the RediPulse Pro-10 and Pulse Recovery System are for use on multiple batteries.

The RediPulse Pro-10 (746X900) Charge/Maintenance System keeps up to ten new 12-volt batteries "factory-fresh" while they rest on the shelf waiting to be installed or sold. It also prevents sulfate deposits from forming on the battery plates and safely provides a continuous charge/maintenance on each battery.

With the Pulse Recovery System, you can pulse up to twenty 6- and 12-volt batteries at the same time. This modular system is available in individual units — a Power Base (740X360) and an Add-On unit (740X420) — that condition two batteries each. They can also be connected to meet your specific battery maintenance needs (up to ten units total). The PRS is *not* a charger, but it can be used in conjunction with a charging system so batteries can be recharged while they are desulfated. 🛠️

## Scientifically-Proven Technology

Independent studies by researchers at Oakland University and Ohio State University recently confirmed that ReNew-It Pulse Technology increases battery efficiency and battery life dramatically. These two-year studies showed that our technology allowed a more even distribution of lead-sulfate crystals over the surface area of the battery plates. It also revealed a significant reduction in the size of crystals. These changes greatly improve a battery's ability to store and provide energy.

Our technology also prevents sulfate-induced corrosion that is the primary cause of shedding of active material on the plates. As a result, the life span of the battery is increased dramatically.



(Left) A battery plate covered in heavy sulfation buildup which reduces the battery's ability to accept, store and release energy. (Right) ReNew-It Pulse Technology™ cleans these lead-sulfate deposits off the plates and converts them to active electrolyte. This process exposes the active material on the battery plates which means batteries are stronger so you get up to three times longer life and maximum performance.



Visit this local  
PulseTech  
dealer today:

**PulseTech**  
Products Corporation